



Lego Club comes to Frankland River

A successful grant from National Backyard Cricket and LBW (Learning for a Better World) allowed the Frankland River CRC to hold their first Lego Club during the school holidays. The grant was used to purchase various Lego sets suitable for a wide range of ages.

This project has been on the 'wish list' for a while and its popularity for the first outing proved the value of the new initiative in our community.

Lego Club will meet once per month, with the next date being Wednesday 30th August.

This year the LBW Trust is delighted to support 78 education projects in Australia's country (rural, regional and remote) public libraries.



**NATIONAL
BACKYARD
CRICKET**



Great Southern CRC Workshop Series



farmers and small business owners... book now!
visit albanybusinesscentre.com.au/crc or call your local CRC

Presented by Albany Business Centre | monthly Wednesdays 10am-12pm

Business info you 'should' know 26 July 2023

info and Q&A on changes in WHS, minimum wage, super, leave and food handling

Canva basics 23 August 2023

step by step on using free online software to design images and flyers for business

Excel basics for business 20 September 2023

finding your way around the spreadsheet, entering data, formulas and formatting

Basics #1 – So you've got an idea? 18 October 2023

turning a side hustle into a business – is it viable? GST? Setting up an ABN and more

Basics #2 – How's your backend? 15 November 2023

basic backend stuff for your new business – invoicing, superannuation and more

Basics #3 – Increase your new business 20 December 2023

strategies and tips to help you take your business to the next level

Social media basics 24 January 2024

why, where, what...what even is a hashtag? An overview to help you budget your time

How to budget 21 February 2024

basic budgeting for small business to help to plan, prepare and prioritise

live and FREE at your local CRC

Bremer Bay | Denmark | Frankland River | Gnowangerup | Jerramungup | Katanning
Mount Barker | Ongerup | Pingrup | Tambellup | Wellstead



farmers and small business owners... book now!
visit albanybusinesscentre.com.au/crc or call your local CRC

Business info you *'should'* know



with Mark and Richard from the Albany Business Centre

Wednesday 10am-12pm

important info and Q&A on changes in health and safety, minimum wage, superannuation, leave entitlements, and new food handling standards.



live and FREE at your local CRC

Bremer Bay | Denmark | Frankland River
Gnowangerup | Jerramungup | Katanning
Mount Barker | Ongerup | Pingrup
Tambellup | Wellstead



They're back!!

Friday 28th July @ 7.30pm

**FRANKLAND RIVER COUNTRY CLUB
STAND UP COMEDY NIGHT**
A FLANNEL PANEL PRODUCTION
WWW.GARETHMCKEAN.COM

Gareth Mckean **Tim Kershaw**

AND LOCAL LARRIKIN BEN BEECH

FRIDAY 28TH JULY

SHOW STARTS 7.30PM **TICKETS \$40**

BURGER OR PIE WITH CHIPS \$15
DOORS OPEN 5PM-KITCHEN OPEN 6-8PM

Please RSVP to 0474 119 901 to reserve your ticket.
Or grab your tickets from the bar.

St Lukes Family Practice Doctors Visits to Frankland River

www.stlukesfamilypractice.com.au

9821 2155 or 9831 0622

Please advise if you wish your appointment at the Frankland River clinic.

**Next visiting date
Wednesday 12th July**

TOY LIBRARY

CRANBROOK - FRANKLAND RIVER

AGM INVITATION

Friday 28 July 2023

09.30am - 10.30am

Cranbrook Community Hub
Cnr Climie & Dunn St, Cranbrook

Information: Beth 0431 891 600

SHIRE SNAPSHOT

FREE EVENT

Shire of **Cranbrook**
Great Southern's Finest

WEDNESDAY 12TH JULY

Come and have some FUN in the school holidays with rollerblades, music and games!

FRANKLAND RIVER HALL 10.30-1PM

Bring water bottle and protective gear (blades provided)

Please register your interest
admin@cranbrook.wa.gov.au or 982610008



Phone (08) 9855 2310

Email: manager@franklandrivercrc.org.au<https://franklandrivercrc.org.au>

Our Services

Government Information

Public Library

Computer Hire

Wi-Fi Internet Hotspot

Centrelink Access Point

Desktop Publishing

Printing

Laminating

Binding

Business Courses

Room Hire

Photocopying

Videoconferencing

Containers for Change

Tourist Information

Kid's Club

Lifestyle Courses

Job Board

Souvenirs

Craft

**The Franklander
Newspaper**

Managers Report

Well, it has been a wet start to the school holidays for sure! Hopefully the kids haven't been driving everyone crazy. It was a great opportunity to start our Lego Club and fun was had by all, the progression in the technical side of Lego is amazing. With apps now to assist with the building and even to operate mechanical Lego it was a lot of fun. I look forward to continuing Lego Club each month. A huge thank you to the National Backyard Cricket library funding for the grant that allows us to purchase all the Lego. Our next Lego Club will be on Wednesday the 30th of August straight after school.

As advertised previously I will be on leave for the next two weeks. Brenda will be filling in for me with Lani assisting. The CRC will be closed on Thursday the 13th, Friday the 14th and Friday the 21st of July.

Dr Dave will be in on Wednesday the 12th July and Allannah the Chiropractor will be in on Friday the 14th, please ring the doorbell to gain access to the CRC as the door will be locked.

Have a wonderful fortnight.

Teresa



Community Garden

Updates & Announcements



To grow social connections through education & sustainable living.

Recipe's

ROASTED CAULIFLOWER SOUP

INGREDIENTS

1 Large Cauliflower (1.5kg), cut into floret's, 1/2 Tbsp ground cumin, 2 Tbsp olive oil, plus extra for drizzling, 4 Thyme sprigs, 1 onion, 1 celery stick, finely chopped, 1 clove of garlic crushed, 750-850ml veg or chicken stock, 100ml cream, 1/2 small bunch of parsley, finely chopped.

METHOD

STEP 1 - Heat the oven to 220C/200C fan/gas 7. Toss the cauliflower florets in a roasting tin with 1 tbsp olive oil, the cumin and the thyme. Roast for 15 mins or until golden and tender. Discard the thyme.

STEP 2 - Heat the remaining oil in a saucepan with the onion and celery and fry over a medium heat for 10 mins or until softened. Add the garlic and cook for 1 min. Stir through most of the cauliflower, reserving some to top the soup with later. Add 750ml of the stock to the pan and bring to a simmer. Cook for 10 mins.

STEP 3 - Blitz the soup until smooth using a hand blender or food processor. Stir through the cream and season to taste. Add extra stock if you like your soup a little thinner. Ladle into bowls and top with the parsley, reserved cauliflower and an extra drizzle of olive oil.

HINT - Try adding Curry powder to give it a bit more zing

Recipe courtesy of BBC Good Food

Weather

Tuesday:
Rain up to 2mm
Top of 18

Wednesday:
Rain up to 1mm
Top of 18

Thursday:
Rainy but clearing
Top of 16

Friday:
Rain up to 7mm
Top of 13

Garden tips

Don't let the weather put you off, there is still a lot that can be done, not only in the garden but in the shed as well. So, pop on a beanie, grab a jacket, your welly boots and get out there! The shed is the perfect place to hide during the rain and sharpen, clean, oil and maintain your garden tools. Sounds tedious, but it will pay off in the long run. Practicing tool hygiene will prevent the spread of disease.

If the sun is out why not top up the mulch on your vegie gardens, not only will your plants reward you for keeping them toasty but the worms will benefit as well.



From the Principal's desk....

What a term! As we end Term Two, we would like to say a big thank-you to all our families, students and staff for a fantastically productive term. Reflecting on the term that has been, we have managed to fit in a lot in 10 weeks; with our Year 4/5/6 camp, winter carnival, cross country events, St John Ambulance fundraiser, 'Walk Safely to School Day', in addition to, and most importantly, all the amazing classroom learning. Many staff, students and families have been battling the winter lurgies, so I wish you all a relaxing, restful and healthy holiday, ready for Term 3. **Students return on Tuesday 18th July.** Staff will be completing professional learning on Monday 17th July – students don't attend.

Faye Challenor - Retirement

We recognised the retirement of Mrs Faye Challenor, our bus driver extraordinaire! Mrs Challenor has been driving the bus for the last 40 years and has witnessed two generations of families attend school at Frankland River Primary School; a pretty amazing feat and we can only guess the stories she could share about our local community members. Alas though, being the professional Mrs Challenor is, she wouldn't indulge us with any stories. Mrs Challenor has taken our students on countless bus trips over the years, and we would like to thank her sincerely for her wonderful efforts. We wish her well as she embarks on retirement and look forward to seeing her as a relief bus driver.

Kindy Sessions – Semester Two

Semester Two kindy sessions are Monday, Tuesday and Thursday.

Interschool Cross Country

Congratulations to our students for their outstanding efforts at the Interschool Cross Country in Kendenup. There were some very fast times run and it was lovely to hear parents, staff and other students cheering each other on. A special mention must be made of Emily Haynes who was placed third in the Intermediate Girls event, and Jasmine Haynes who was third in the Senior Girls event. In some wet and slippery conditions, it was fantastic to see our Interschool Cross Country team pushing themselves to do their very best. Our school was placed third overall, with Kendenup Primary School winning the shield for 2023.

K-P-1 History: Comparing the Past and the Present.

The Kindy, Pre-Primary and Year 1 class would like to extend a big thank you to Brenda Brown from the Frankland River CWA branch. We loved hearing about what school was like when you were young, and we especially liked sharing our classroom with you.

Visual Arts with Mrs Baker

Under the watchful eye of our arts teacher, Mrs Virginia Baker, our Year 4/5/6 students created some moccasins, as part of an upcycled functional art project. Here's a blurb from Mrs Baker about the process and skills acquired through the project.

Purpose: To provide students with an opportunity to reuse textiles to help contribute to a more sustainable future for us all.

Skills practiced: research, lino print making and sewing techniques.

These moccasins were created using used clothes and materials that were destined for donation or landfill.

Firstly, the children needed to research North American traditional moccasin designs. Each tribe has different designs and variations within the tribe to help identify different roles. Then using their research as their inspiration, they had to create a design meaningful to themselves.

They then needed to transfer their design to lino to create the template for their print by carving. This involved cutting away the areas of the lino, using linocut tools, to leave only the surfaces they wanted to print. Paint was then applied and used to create a print which was used to for the tongue of the moccasins. They then needed to measure and co-sew the moccasins for a correct fit. Finally, some decorative stitching was added. Students found that sewing can be very tricky!

This has been a great way to learn that art can have a function and use resources that otherwise may have been wasted.

Sustainability News

This term in Sustainability we have been busy trellising, weeding, fertilising and watching our Winer Veggie crops grow. Our first vegetable ready was the Bok Choy. As the weather has been bitterly cold, we decided to make Bok Choy and chicken noodle soup using our freshly grown Bok Choy of course! Children got to try the Bok Choy raw (crunchy) and cooked, in the soup, which led to mix reviews! Hopefully the cabbages, broccoli, peas and cauliflowers will be ready at the beginning of Term 3.

2024 Kindy Enrolments - Will your child be 4 next year?

In Western Australia, children can start their education in Kindergarten, however compulsory schooling starts the following year in Pre-primary.

Who needs to enrol?

You need to apply to enrol your children in school for 2024 if they are:

- starting Kindergarten – If your child is turning 4 years old before 30 June 2024.
- starting Pre-primary, the first year of compulsory school – 5 years old before 30 June 2024.

Enrolments are now open.



2023 BLOOM Photograph Competition



*Photo
Competition*

FREE ENTRY

*Country
Life*

Enter the Frankland River CRC Bloom Photo Comp by sending us your 4 best photographs of 'Country Life' for any category!!

Competition closes 22 September 2023

Categories -

Adult, Open, Junior (under 14yrs)

The winning images will feature on our website, in social media & The Franklander newspaper.

2023 Frankland River Community Resource Centre Photographic Competition Conditions of Entry

What type of photograph can be entered?

- Anything that fits into the nominated categories and has been taken during 2022/23. If you are entering photos of people please ensure you have their permission.
 - All entries **MUST** be in the form of a print, and a digital version must also be supplied.
- Print size **MUST** be: ADULT & OPEN - 8 x 10 (20cm x 25cm). JUNIORS - 5 x 7 (12.5cm x 17.5cm)
 - Please **DO NOT MOUNT** or LABEL/TITLE Prints.
- Please ensure that your name/s and category are on the back of the photo.
 - Prints may be black & white or colour, and up to 4 photographs per category per entrant may be entered.
 - Entry to the competition is free.
- Photos must have been taken by the entrant.
 - All entries must include a completed form, correctly sized print and a digital image.
- The judge's decision is final and no correspondence will be entered into.

- The Frankland River CRC will own all digital images with rights of use for promotion, and may pass images on to sponsors.

Entrants' names will be included to acknowledge their work where possible. Prints entered in the competition can be collected from Frankland River CRC at completion of the display. Display will run from 2nd - 7th October.

- The Frankland River CRC reserves the right to refuse or not display an entry.
- Entries must be received at Frankland River Community Resource Centre, 55 Wingebellup Road Frankland River by 4.00pm on **Friday 22nd September 2023.**

NO LATE ENTRIES CAN BE ACCEPTED

Productive Saltland Pasture for Southern WA

MLA PDS PROJECT L.PDS.2203

THIS PRODUCER DEMONSTRATION SITE PROJECT AIMS TO IMPROVE LAND MANAGERS KNOWLEDGE AND SKILLS IN THE ESTABLISHMENT, MANAGEMENT, AND BENEFITS (PROFITABILITY, PRODUCTIVITY, AND SUSTAINABILITY) OF SALT-TOLERANT FORAGE SYSTEMS ON MODERATELY SALT-AFFECTED LAND. THE OBJECTIVE OF THIS PROGRAM IS TO ESTABLISH 150 HECTARES OF SALT-TOLERANT FORAGE PASTURES ON 6 LOCAL SITES TO DEMONSTRATE VARIATION IN PRODUCTIVITY OF KEY SHRUB AND UNDERSTORY VARIETIES AND A PADDOCK SCALE INCREASE LATE SUMMER/AUTUMN (FEBRUARY – APRIL) BIOMASS PRODUCTION AND SOIL ORGANIC CARBON AND TOTAL CARBON.

THIS PROJECT IS FUNDED THROUGH MEAT AND LIVESTOCK AUSTRALIA (MLA) PRODUCER DEMONSTRATION SITES (PDS) PROGRAM, A CONTINUATION OF GILLAMII'S COMMITMENT TO THE REMEDIATION OF SALT-AFFECTED LAND INTO PRODUCTIVE PASTURE SYSTEMS FOR LIVESTOCK GRAZING. IN-KIND SUPPORT HAS BEEN PROVIDED BY DPIRD, CSIRO, HOST AND CORE PRODUCERS, THANK YOU TO ALL WHO HAVE BEEN INVOLVED.

PROJECT UPDATE

In Spring last year 4 sites, totalling 66 hectares, were established with perennial salt-tolerant pastures in collaboration with 3 host farming families. There are two additional sites to be established in August this year, bringing the total area to 150 hectares.

The sites are located throughout the Broomehill-Tambellup and Cranbrook shires, ranging from valley floors to areas further up the landscape in the transition zone of productive to salt affected soils. The motivation of producers to develop these areas into salt-tolerant pastures systems is to use both surface and ground water to manage the site's local salinity, while keeping the areas as productive paddocks, part of their various livestock enterprises.



Core producers, DPIRD and Gillamii staff at one of the PDS sites discussing solutions

On the 23rd of June 2022 a group of local producers and Department of Primary Industries and Regional Development (DPIRD) staff, hosted by Gillamii, spent the day visiting the sites to workshop ideas for pasture establishment. The aim of the workshop was to utilise the knowledge of Gillamii's producers, experienced in productive saltland pastures, and connect them with the new PDS producers, aided by expertise from DPIRD. The group discussed the best pasture mixes, site design and establishment plan, tailored to local conditions and based on producer experiences. Salinity (EC), pH, elevation as well as indicator species had been analysed prior to the workshop to provided information to support decision making on the day.

The outcome of these workshops were 4 different site designs and species mixes, two comprising of pastures with pre-established saltbush, one to be direct seeded with saltbush alleys and a pasture understory and the remaining to be planted with saltbush seedlings in alleys with a volunteer pasture understory.



Gillamii Project Officer observing pasture establishment in October 2022

Direct seeded saltbush germinating

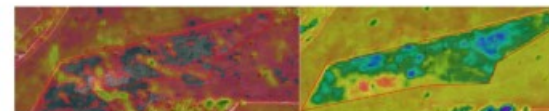


December 2022 (Three months after establishment)

April 2023 (Seven months after establishment and two grazes)

Since establishment last spring, all sites have had successful establishment and survived the first and very dry 2022-23 summer-autumn period. The two complete pasture sites had such successful establishment that they were grazed twice within the first 6 months of establishment. The remaining two sites with juvenile saltbush require stock to be excluded for the first year to allow proper establishment of the fodder shrubs.

As part of this project both pasture and livestock parameters are being monitored (2022-2027) to demonstrate the key benefits of these systems. Parameters include: soil organic carbon, biomass (summer-autumn period), pasture nutrition (summer-autumn period), grazing days, live-weight gain and cost-benefit analysis. Please see following page for how the sites are progressing. Measurements are been taken during the summer-autumn period each year.



NDVI imagery of one of the pasture sites for March 2022 and March 2023 (surrounded by crop stubble) indicating the increase in green biomass during the summer-autumn period

A field walk is planned for spring this year, with two more field walks throughout the project as the sites develop and producers and their livestock fully utilise the sites. These field walks will showcase the pros and cons of the different systems as well as be an opportunity to discuss how the sites perform on paper vs real farmer accounts of practical management and utilisation.

**SAVE THE DATE: PASTURE FIELD WALK
20TH SEPTEMBER 2023**



Productive Saltland Pasture for Southern WA

NOTE: ANALYSIS WAS CONDUCTED DURING THE SUMMER-AUTUMN PERIOD

Perennial Pastures



In the first year of establishment the crop stubble has outperformed the pasture in total kg/ha of biomass, however nutritional value is looking increasingly positive, with chicory and lucerne having a noticeably higher % of Dry Matter Digestibility (71.8%) and Crude Protein (19.4%)

SUMMARY (2 SITES)

Baseline Pasture/Crop in Summer-Autumn: Barley crop stubble with surrounding old man saltbush

New Established Species: Megamax Panic, Howlong Cocksfoot, Lucerne SARDI 7 Series 2, Commander Chicory, Tall Fescue, Tall Wheat Grass and Puccinellia

Cost/Hectare: \$528.00

Average Annual Grazing Days: To be analysed

Year 1 Summer-Autumn Biomass/FOO: Overall biomass per hectare decreased (grazed once in the 6 months since it has been established). Therefore in the first year establishment when specifically focusing on total biomass, stubble outperformed the saltland pasture, with a 4.6 - 107% decrease in total biomass per hectare within the first year of establishment

Nutrition: -4.2% to +5.2% change in ME (Mj/Kg), 18% - 93% increase in Crude Protein

Average Liveweight Gain: To be analysed

Cost-Benefit Analysis: To be analysed



Direct Seeded Saltbush & Understorey

SUMMARY (1 SITE)

Baseline Pasture/Crop in Summer-Autumn: Volunteer pasture consisting of Toad Rush, Barley and Rye Grass

New Established Species: Balansa Clover, Tamargee Kikuyu, Puccinellia, Rhodes Grass and Tall Wheat Grass with direct seeded dual saltbush alleys (Old Man, River and Wavy Saltbush)

Cost/Hectare: \$466.50

Average Annual Grazing Days: Grazing has been differed to allow for adequate saltbush establishment

Biomass & Nutrition: This site increased it's total biomass per hectare by 80% in the first year since establishment

Nutrition: 22% Increase in ME (Mj/Kg), 6% decrease in Crude Protein

Average Liveweight Gain: To be analysed

Cost-Benefit Analysis: To be analysed



Lowest cost system with biggest increase (114%) in digestible summer-autumn biomass when compared to the original volunteer pasture

Saltbush Seedlings & Volunteer Pasture



SUMMARY (1 SITE)

Baseline Pasture/Crop in Summer-Autumn: Volunteer pasture consisting of Barley Grass, Puccinellia, Broome Grass and Rye Grass

New Established Species: Old Man Saltbush, Melaluca and Eucalyptus seedlings

Cost/Hectare: \$1326.00

Average Annual Grazing Days: Grazing has been differed to allow for adequate seedling establishment

Year 1 Summer-Autumn Biomass/FOO: This site increased it's total biomass per hectare increasing by 50.4% in the first year since establishment

Nutrition: 8.7% Increase in ME (Mj/Kg), 4% decrease in Crude Protein

Average Liveweight Gain: To be analysed

Cost-Benefit Analysis: To be analysed

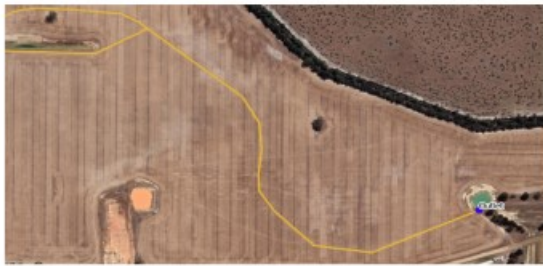
Sub-surface Catchments: Drought Demonstrations

FDF Project: FDF-MU37-P1

IN THE LOCAL CATCHMENT, FARMERS HAVE BEEN IMPLEMENTING SUB-SURFACE PERFORATED PIPING TO DRAIN AWAY EXCESS WATER IN WATERLOGGING (OR SALINE) PRONE AREAS OF THEIR PROPERTIES. IN RECENT YEARS A FEW PROGRESSIVE FARMERS HAVE UTILISED THIS SYSTEM, TRADITIONALLY USED FOR DRAINAGE, TO INTERCEPT SUBSURFACE WATER BEFORE IT REACHES THE SHALLOW, SALINE GROUNDWATER TABLE, REDIRECTING IT INTO THEIR DAMS, INCREASING ON-FARM WATER SECURITY AND HELPING REDUCE THE IMPACTS OF PROLONGED WATERLOGGING AND SALINITY. THE SUB-SURFACE DRAINAGE COSTS ROUGHLY \$10,000/KM AND CURRENTLY, THERE IS NO MONITORING IN PLACE TO DETERMINE THE FLOW RATE, TOTAL FLOW, WATER QUALITY AND RESPONSE TO RAINFALL OF THIS DRAINAGE, THEREFORE THE VALUE OF THE FRESH WATER BEING CAPTURED IS UNKNOWN. MANY FARMERS ARE STILL USING THESE SYSTEMS SOLELY FOR DRAINAGE, POTENTIALLY FORGOING A HIGHLY VALUABLE AND LIMITED RESOURCE.

PROJECT OVERVIEW

Supported by the Future Drought Fund, Gillamii in collaboration with 4 local farmers will utilise pre-established sub-surface drainage systems to establish a monitoring network to measure the flow rate, total flow, response to rainfall and water quality at the 4 sites. The outcome of this monitoring will be to inform the local grower network of the potential opportunity to capture fresh sub-surface water, building increased drought resilience.



Project Monitoring Site: Map of sub-surface drainage

Drainage Downunder is the highly skilled and professional business that installed all of the sub-surface drainage being monitored as part of this demonstration project. Drainage Downunder was contracted by the project landholders to install the drainage outside of the scope of this demonstration, completely privately funded.

Drainage Downunder's constructions consist of a trenching machine that digs, lays pipe and backfills all in the one action. The specialised laser-regulated trenching machines are purpose-built in the United Kingdom and provide total grade control of subsoil drainage construction. The drainage incorporates a controlled depth of permeable hard-cap limestone aggregate over laser-graded slotted drain coil placed up to 2.4 metres in depth. This drains cause minimal paddock disturbance and can be cropped over etc., virtually invisible on the surface.



Source: Drainage Downunder (Draining fresh water into dams)

PROJECT MONITORING

Farmbot was established in Sydney in 2014 and is a leading Australian Agtech company. Their Saas Platform gathers data points via their unique IoT device that puts Farmers "in the know" on their water assets with near real time reporting on water levels, trends and alerts anywhere in the world.

The sensors below will be set up near/in the end of the 4 outlet pipes near the edge of the dams.

Monitor

The Farmbot Monitor is the remote monitoring device that integrates with Farmbot's range of wired and wireless sensors to allow real time remote monitoring and access to data. This will be installed on a star picket near the edge of the dam with wires covered with a protector to stop livestock damage.



Flow Sensor

Reports litres-per-minute flow rates. To be attached at the outlet of the pip, with an additional 30cm of pipe to be added at the end before it discharges into the dam.



Rain Gauge

The Rain Gauge sits within 2 metres of the Farmbot Monitor, is self-installable and immediately operational. It is a self-emptying tipping bucket rain gauge. Compare daily, weekly, monthly and yearly rainfall. See the last 24 hours, MTD, YTD and Rolling 90 days.



Software & System

Login online or on your phone to see real time data. This will be publicly available for to the community to view on the Farmbot software via the Gillamii website.



Monthly Water Sampling

Water samples to be taken from the pipe outlets each month and posted to CSBP for their standard analysis to determine water quality (spray water and stock water).



SAVE THE DATE: DEMONSTRATION FIELD DAY
20TH SEPTEMBER 2023

This project was supported by 4 local farming families, Drainage Downunder, South Coast NRM and the Gillamii Centre, through funding from the Australian Government's Future Drought Fund.



Australian Government
Department of Agriculture,
Water and the Environment



Future
Drought
Fund



SOUTHCOAST
NATURAL RESOURCE MANAGEMENT





Live,
virtual group fitness
classes at 55 Wingebellup
Road.
9:15am every Monday,
Wednesday and Friday
for 30 minutes.



Live,
virtual workouts at 6am
every weekday morning
from the comfort of your
own home.
OR
play them back anytime
that suits you.

**Join the FLF Community to move for your
mental health, your physical health, and your
community health at Frankland River CRC.**

Open to anyone who
wants to connect
with their community and
get some exercise at the
same time.

Cost: \$60 per month

Sign up by 1/08/23

Starts 7/08/23

EMAIL:

admin@farmlifefitness.com.au



Frankland River

Community Resource Centre

Your local connection



55 Wingebellup Road
Frankland River WA 6396
Telephone: (08) 98552310
Email: reception@franklandrivercrc.org.au
ABN: 81 975 774 438
Find us on Facebook

MEMBERSHIP APPLICATION

2023 - 2024 FINANCIAL YEAR

SENIOR/CONCESSION

- UNLIMITED internet access
- The Franklander emailed directly to you.
- MEMBER DISCOUNTS ACROSS A RANGE OF PRODUCTS & SERVICES (Exclusions Apply) \$10

INDIVIDUAL

- UNLIMITED internet access
- The Franklander emailed directly to you
- MEMBERSHIP DISCOUNTS ACROSS A RANGE OF PRODUCTS & SERVICES (Exclusions Apply) \$15

FAMILY

- UNLIMITED internet access
- The Franklander emailed directly to you
- Free or discounted entry to School Holiday & After School programs
- MEMBERSHIP DISCOUNTS ACROSS RANGE OF PRODUCTS & SERVICES (Exclusions Apply) \$30

BUSINESS/COMMUNITY GROUPS

- FREE half page colour advertisement, in 1 edition of the Franklander April or October
- The Franklander emailed directly to you
- A link to your Business on our website
- MEMBER DISCOUNTS ACROSS A RANGE OF PRODUCTS & SERVICES (Exclusions Apply) \$50

COMMITTEE

- UNLIMITED internet access
- The Franklander emailed directly to you
- MEMBERS DISCOUNTS ACROSS A RANGE OF PRODUCTS & SERVICES (Exclusions Apply) \$2

Name: _____
Address: _____
Telephone: _____
Email: _____

All Subscribers become members of the Frankland River CRC and are entitled to membership rights, as per the Constitution, including the right to vote at the annual general meeting, and other benefits as determined by the Committee.

The Frankland River CRC Constitution can be found on the website www.franklandrivercrc.org.au, or it can be emailed to you or provided in a printed format upon request.

Please tick the box below if you wish to receive a copy of the Constitution:
I would like to receive a copy of the Frankland River CRC Constitution by email or printed

Declaration: I/we hereby agree to abide by the rules and Constitution of the Frankland River CRC Inc., to pay all amounts owing by me/us when due and to take appropriate care in the use of the Frankland River CRC and the equipment contained therein.

Signature _____ Date _____

Account Details: Frankland River Community Resource Centre Inc

Bendigo BSB: 633 000 Account: 111 852 703

Reference: Full Name Payments Accepted: Cheque, Direct Banking & Cash

Proudly Sponsored By



Department of Primary Industries and Regional Development





Avoid tax time scams

Ongoing cost of living pressures mean many Western Australians will be looking forward to receiving tax refunds, but the end of a financial year is also a time when scammers emerge with false promises of monetary windfalls.

In a sign scammers are once again ramping up their tax-time efforts, our WA ScamNet team has received reports of a phishing email claiming to be from the Australian Tax Office (ATO), but is actually from a completely unrelated email address.

The fake email (which even comes with stolen Australian Government logos) promises a refund of several hundred dollars, but only if the recipient sends across their personal and financial information in return. The scammers would then likely use this information to commit identity theft and steal their money.

Unfortunately this email is just one of many ways scammers target their potential victims, with more than 19,000 scam reports received by the ATO during the 2022-23 financial year alone.

Along with text messages and threatening phone calls, scammers are increasingly turning to social media.

Both the ATO and myGov have expressed concerns about fake social media accounts impersonating their organisations, staff and senior executives that ask users to send a direct message so they can make phony offers of help with taxes or fake refunds.

No matter how you're contacted, the best way to stay safe from tax-time scammers is to 'practice the pause' on calls, emails and messages that come out of the blue and never send your personal or financial information to someone you don't know or trust.

For social media messages, investigate the account that has messaged you – look for verified ticks showing the account is genuine, then check the follower numbers and recent activity for any red-flags.

On emails, click or hover over the sender's name to find the full email address. If you receive a phone call, hang up and call back the organisation using contact details you have independently sourced.

Report suspicious calls, emails or messages claiming to be from the ATO to ReportEmailFraud@ato.gov.au or myGov to reportascam@servicesAustralia.gov.au

From: "Australian Taxation Office" <mstm13579@tax.hq.gov.au>
 Date: 9 June 2023 at 04:48:22 AWST
 To: [REDACTED]
 Subject: Your refund tax are now available for reviewing. (Ref: 000000-000068-290084-005)



COMMUNICATION OF INCIDENCE IN THE 2021-2022 INCOME STATEMENTS.

In relation to the resolution issued by this Provincial Directorate of the Australian Taxation Office, your taxable income has been retroactively recalculated (Model 100, Personal income tax, Annual declaration).

This resolution informs that you are entitled to receive compensation in the amount of AU\$648.13.

You must request disbursement in your favor within 10 business days via email at refund@review-ato-office-australia.com.

Please include the following with your request:

- Your Tax File Number (TFN).
- Your BSB and Account Number or Osko PayID.
- Your current Residential Address.
- Copies of both sides of your Driver Licence.
- Copy of your Medicare card.

This resolution has been reached in accordance with the provisions of article 21.3 of the Fair Work Legislation Amendment Bill 2022. After the 10 days claim period, the filing of proceedings will take place.

Learn more about [tax scams](#) on WA ScamNet's website at www.scamnet.wa.gov.au

If you have handed over personal information, immediately contact IDCARE at www.idcare.org.

Great Southern Classic Car Show

Sunday 24th September 2023
10am to 3pm



Strickland St Denmark

For Information email us
gsclassiccars@gmail.com

Enter your Car (Pre 1990) or Bike
www.gsclassiccars.com

Cruise in and enjoy
the show
Prizes for top vehicles



Referee Recruitment Rolls in 2023

Albany Roller Derby need referees.

The 2023 season is already looking to be a big one with games scheduled in Albany and Perth until November. People are encouraged to join the club and learn to be a roller derby official.

Referees must have good skating skills in order to skate fast, stop quickly, and manage speed while keeping an eye on the players on the track. They may use quad skates or roller blades. They learn the game's rules, specific calls, and gameplay during the 10 week program. Skaters get to join a fantastic sports team that is open and inclusive to people of all genders. Roller derby is a great way to keep fit, meet new people and learn a new skill.

Experienced referee and player Julie "Bad JuJu" Carson said "One of the cool things about being a ref is being able to be part of the game with no fear of contact when starting your derby career." Referees are not expected to learn any contact drills, but participate in weekly scrimmage games to learn how to call penalties and how to look for illegal play.

Bad JuJu has also travelled to interstate tournaments to officiate "You have a chance to travel to events and tournaments with the team and meet officials from all over the world and grow your knowledge of the game each time you officiate"

Roller derby is a full-contact sport that is played on a flat track at fast speeds and with high impacts. Skaters need to be effective communicators and team players in addition to being talented skaters. Referees must also be skilled, have a keen eye for detail, be able to enforce rules, and enjoy cooperating with others.

"We are encouraging anyone who can skate or blade to head along and try this, it's a fun and dynamic sport and a great inclusive club for all people," Coach Jarvis said.

Ages 16 and up, persons of all genders, sexual orientations, and sexes are welcome at Albany Roller Derby, and the team has a diverse roster of skaters from a range of religions, ethnicities, and backgrounds.

Registration is required for the 10-week course, which begins on July 20, and may be done online at albanyrollerderby.com.au.

23 SEPTEMBER - 31 OCTOBER

GREAT SOUTHERN TREASURES

BLOOM
Festival

SCAN FOR
WHAT'S ON AND
TO FIND
TICKETS
BEFORE THEY
SELL OUT!

greatsouthern-treasures.com.au

Presented by

WESTERN AUSTRALIA
WALKING ON A DREAM

RioTinto

GREAT SOUTHERN

Regional Development
GREAT SOUTHERN

Ausgold



Southern Art+Craft Trail

Event 2023

Spanning over 35 000km², the Southern Art and Craft Trail is the largest of its kind in Western Australia.

This year we will showcase the creative works of over 400 artists and 400 plus students in 74 venues. These venues include galleries, home studios, town halls and school displays in retail shop fronts and public spaces across the greater southern region from Lake Grace through to Manjimup, out to Walpole and across to Albany.

This is a 30% increase on 2022 and a fantastic return in confidence for the Art sector after the restrictions of COVID19 in 2020.

The Art Trail launch will be held on Saturday 16 September at the Albany Town Hall. It is hoped that we can gain further financial support so we can extend the invitation to include more people. The launch will also include some extra celebrations as we look back on our 20+ year history.

QWIK TAX

Have your return prepared in your home by an experienced Chartered Tax Advisor



LET US COME TO YOU!

IN HOME TAX RETURNS FROM \$165
After hours appointments are our speciality
Servicing the entire Great Southern Region

- Business Advisory Services
- Business Planning
- Bookkeeping Services
- Taxation Consulting
- Goods & Services Tax (GST)
- Income Tax Returns



**Contact: 048 QWIK TAX
0487 945 829**
Gillamii Centre, 140 Climie St, Cranbrook

ADVERTISEMENT



Contact me to discuss State Government matters - let me know what is important to you

Hon. Shelley Payne MLC
Member for Agricultural Region

92 Dempster Street, Esperance WA 6450

9072 1786
 ShelleyPayneMLC
 shelly.payne@mp.wa.gov.au

Authorised by Shelley Payne, 92 Dempster Street Esperance WA 6450

TOY LIBRARY

CRANBROOK · FRANKLAND RIVER

Frankland River: Wednesday 9-12
Cranbrook: Friday 11-12

Contact Bron on 0408 939 049 for queries

INJURY PREVENTION & REHAB



reach
FAMILY CHIROPRACTIC

PAEDIATRIC & PREGNANCY CARE

FRANKLAND RIVER CRC

upcoming dates:
2nd JUNE 14th JULY
30th JUNE 4th AUGUST

www.reachfamilychiro.com.au
 0413 478 975
hello@reachfamilychiro.com.au
 Reach Family Chiropractic



TOTAL CONTAINERS

SEA Containers WA

SALES - HIRE - MODIFICATIONS - STORAGE



0423 957 043
www.seacontainerswa.com.au

"Servicing the South West"

Frankland Rural

Agricultural Supplies | Agronomy | Animal Health

OPENING HOURS: 3 Trent Street, Frankland River WA 6396
 Monday to Friday: 7:30am - 5:00pm P: (08)9855 2288
 Saturdays: 9am - 12pm M: 0477 552288
 E: admin@franklandrural.com.au

OUR TEAM

Tim Trezise - Agronomist & Director: 0429 311 795
 Chloe Casson - Manager & Director: 0416 540 759
 Zali Spencer - Animal Health & Production: 0418 922 178
 Andrew Smith - Agronomist: 0438 263 910
 Bronwen Coole - Finance Officer: (08)9855 2288
 Chloe Worth: Sales & Administration: 0477 552288
 Wendy Clarke - Accounts: (08)9855 2288
 Julie Ettridge - Truck Driver & Shed Manager: 0428 135 766
 Garry Clarke - Shed & Packing department: (08)9855 2288










Helping you to be the most profitable and sustainable farming business



CLODE RURAL FENCING

RURAL FENCING CONTRACTOR
SERVICING FRANKLAND RIVER & THE GREAT SOUTHERN AREA

☎ 0476 230 567
 📧 darcyclode89@gmail.com

Specialising in all aspects of fencing including:

- Rural Fencing
- Stockyards
- Strainers
- Exclusion Fencing




FRANKLAND RIVER PUBLIC LIBRARY

8 Wingebellup Road
 Frankland River WA 6396
 9855 2310 E: flibrary@wn.com.au

Monday to Friday 9:00am - 4:30pm



Frankland River Solitary Style Plates

Frankland River Solitary Style plates are available at a cost of \$220.00.

They make a fabulous gift for birthdays, or the new car buyer.

If you are interested please complete an application form from the Frankland River Community Resource Centre and return to Teresa Lawson with payment.

Please call 9855 2310 for any enquiries.



SHAMROCK LOGISTICS

Rhys
0438 162 679
Melanie
0419 927 559

Frankland River WA 6396
 shamrocklogisticswa@gmail.com

Bulk Ag General Freight Wool



Ranger Contact Number

The Shire of Cranbrook Ranger can be contacted for all ranger services and queries on

0499 799 133.

For current bushfire information & fire danger ratings

emergency.wa.gov.au

Celebrating a special occasion?

If you would like to send congratulations, share the birth of a new addition to the family, post birthday wishes, celebrate an engagement, wedding, anniversary or special achievements we would love to hear from you!

Email: franklander@franklandrivercrc.net.au

Frankland River General Store

Trading Hours

Monday to Friday

6.30am - 6.00pm

Saturday & Sunday

9.00am to 12noon

Public Holidays as advertised

Phone: 9855 2265

FRANKLAND RIVER



SHEARING SERVICES

0427 338 913
ANDREW McFARLANE

We are growing our business!
We have dedicated teams on board
So if you need help with your shearing.
Give me a call 0427 338 913

EC 128 55



0408 239 142

● Industrial ● Commercial ● Residential

dylan@djelectrical.com.au



local carrier for

bulk wool livestock general

Bear & Kristy

M: 0427 785 225

E: admin@cbkhaulage.com.au

Dr Miles Nye-Chart

Bsc BVMS (Hons)

And Associates

Mount Barker

Monday - Friday

8:30am - 5:00 pm

Saturday

9:00am - 12:00 noon

Cranbrook

Tuesday

9:00am - 10:00am

Farm calls by appt. after 10:00am

Companion Animals

- Routine vaccination, microchipping
- Bloods, x-rays and ultrasound
- Premium pet food and pet accessories
- Day boarding
- In-house surgery and laboratory facilities

Large Animals

- Advanced equine dentistry
- Equine medicine and stud reproduction
- Horse tendon scanning and x-rays
- Ultrasound pregnancy scanning of sheep and cattle
- Sheep and cattle herd health
- Bull fertility assessment
- Worm egg counts and drench resistance testing



Large and small we treat them all.

Consultations by appointment

9851 1177

24 hour emergency service available!



69 Lowood Road | PO Box 57 | Mount Barker WA 6324 | Ph: (08) 9851 1177 | Find us on Facebook and Instagram



www.mtbarkervet.com.au

admin@mtbarkervet.com.au

After hours emergency only: 0427 426 203



Southern Forest Machinery

11320 South Western Highway,
Manjimup

Ph: 9777 2100

Machinery sales, parts & service – workshop or mobile

Tractors	Lawnmowers
Hay & Feed Gear	Quad Bikes
Horticulture equipment	Side by Sides (UTV's)
Spray & Tillage Equipment	Spreaders & attachments

Brands include Massey Ferguson, Fendt, McHale, Jaylor, Hydralada, Boomerang, CF Moto, Landboss, Hardi, Croplands, John Shearer, HIMAC & more!

www.southernforestmachinery.com.au



Frankland River Community Resource Centre
Your local connection



SEED LIBRARY

It's as easy as ... Join - Borrow - Grow - Save - Return

We would like to take this opportunity to extend a grateful note of thanks to our annual advertisers who continue to support your local community paper with their paid advertising; some of these have been with us since inception of the local rag in early 1998.

This assists us with production costs and allows FREE fortnightly circulation to residents in our district. Thank you all.

IR & TM POPE
Shearing Contractors
4 and 5 stands
Vacancies
Servicing Cranbrook
Mt Barker &
surrounding areas
 Ring Ian Pope
 0427 268 043

Ken Stone
motor trimmer
 (ALBANY CANOES & PLASTICS)



- ♦ TARPULINS
- ♦ CANVAS CANOPIES
- ♦ SHADE COVERS
- ♦ BANNERS
- ♦ ALL TYPES OF VEHICLE UPHOLSTERY
- ♦ TONNEAUS
- ♦ BOAT COVERS
- ♦ MACHINERY COVERS
- ♦ PILOT INDUSTRIAL SEATING
- ♦ RETRO CHILD SEATS

"Quality Materials & Workmanship"
 ♦ AUTOMOTIVE ♦ MARINE ♦ AGRICULTURAL



22 PRIOR STREET, ALBANY
 PHONE 9841 6688 - FAX 9842 5052

Recycling Dates

Every second Monday

24th July

7th August

21st August

4th September

FERNGROVE
 GREAT SOUTHERN
 WESTERN AUSTRALIA

AWARD WINNING WINES WITH A VIEW

Tastings welcomed by appointment.
 Weekdays 10am - 4pm.
 See our website for holiday opening times.

276 Ferngrove Road, Frankland River
 Phone: 9855 2378 www.ferngrove.com.au

ALKOOMI WINES
 1141 Wingebellup Road,
 Frankland River, WA 6396

FINE WINES & OLIVE OIL

Visitors Welcome
OPEN 7 Days - 10am to 4.30pm

Picnic Facilities, Chalets & Function Room Hire Available

Telephone: (08) 98 552 229
 Fax: (08) 98 552 284

Email: info@alkoomiwines.com.au
 www.alkoomiwines.com.au

CLARKE
SHEARING
0427 359 570
P O BOX 558
MT BARKER WA 6324
CONTRACT OR COST



FRANKLAND ESTATE

Visitors Welcome

Open weekdays 10.00 am to 4.00 pm
Weekends and Public Holidays by appointment
Frankland Rocky Gully Road
Ph: 9855 1544

JULY/AUGUST 2023

SUNDAY	MONDAY	TUESDAY	WEDNESDAY	THURSDAY	FRIDAY	SATURDAY
		11	12 DOCTOR Roller Blades, Music & Games 10.30am	13 Nunijup Patchwork Op Shop 10am - 1.30pm Waste Station 1:00pm - 5pm	14 CRC Closed Waste Station 7:30am - 11:30am Chiropractor 10.30am	15 Op Shop 8.30 - 12.30
16 Waste Station 7.30am - 11.30am Catholic Mass	17 Waste Station 1:00pm - 5pm	18 Back to School Term 3	19 Playgroup & Toy Library	20 Nunijup Patchwork Op Shop 10am - 1.30pm Waste Station 1:00pm - 5pm	21 CRC Closed Waste Station 7:30am - 11:30am Article deadline	22 Op Shop 8.30 - 12.30
23 Waste Station 7:30am - 11:30am	24 Recycling Waste Station 1:00pm - 5pm	25 Gardening Morning 10am	26 Playgroup & Toy Library Business Info You Should Know 10am	27 CRC Closed Op Shop 10am - 1.30pm Waste Station 1:00pm - 5pm	28 Waste Station 7:30am - 11:30am Toy Library AGM Comedy Night @ Club 7.30pm	29 Op Shop 8.30 - 12.30
30 Waste Station 7:30am - 11:30am	31 Waste Station 1:00pm - 5pm	1	2 Playgroup & Toy Library	3 Auschem Nunijup Patchwork Op Shop 10am - 1.30pm Waste Station 1:00pm - 5pm	4 Auschem Waste Station 7:30am - 11:30am Chiropractor 10.30am Article deadline	5 Op Shop 8.30 - 12.30
6 Waste Station 7:30am - 11:30am	7 Recycling Waste Station 1:00pm - 5pm Virtual Group Fitness 9.15am	8	9 Playgroup & Toy Library Virtual Group Fitness 9.15am	10 Op Shop 10am - 1.30pm Waste Station 1:00pm - 5pm	11 Waste Station 7:30am - 11:30am Virtual Group Fitness 9.15am	12 Op Shop 8.30 - 12.30

Church Announcements

Anglican

Cranbrook:

Ist, 2nd, 3rd & 4th Sunday 10.00 am
at St Oswalds Church
Contact - Jan Pope 0417 981 264

Tenterden:

On a 5th Sunday of the month 10:00 am
at St Mildred's Church

Baptist

No services at Frankland River until further notice

Cranbrook Service 10.00am

Cranbrook Frankland River Baptist Church

Services are also uploaded to YouTube

https://www.youtube.com/channel/UCV4nIqkuX_cj7LwacAgAdAw

Contact Jason Watterson 0439 976 989

Catholic

Parish Priest Father Ely Comanda

Ph 0421 282 775

Contacts:

Clarissa Devine 0497 545 334

Debbie Coole 0427 240 556

Mass Times - 3rd Sunday of the month
at the Frankland Catholic Church at 3.00pm.

All new community members warmly welcomed.

EMERGENCY NUMBERS

- Ambulance 000
- Primary Number for ALL
Emergency Assistance 000
- Hospital Mt Barker 9892 1222
- Hospital Albany 9892 2222
- Poisons Info Centre 13 11 26
- Cranbrook Police (08) 68013840
- Crime Stoppers 1800 333 000
- Fire Brigade:
 - Frankland Town 0427 552 321
 - Frankland 0458 552 271
 - Chief BFCO 0407 261 005
- DFES 1300 657 209
- Vet Mt Barker 9851 1177
- Vet Kojonup 9831 1666
- Southern Agcare 9842 2956
- HACC - Mt Barker 9851 2015

AA
Contractors 

Earthmoving & Freight

Frankland River

 **0427 552 321**

**TO THE
RESIDENT**

The Franklander

Frankland River Community Resource Centre

8 Wingebellup Road

Frankland River 6396

Phone: 9855 2310

Email : franklander@franklandrivercrc.org.au